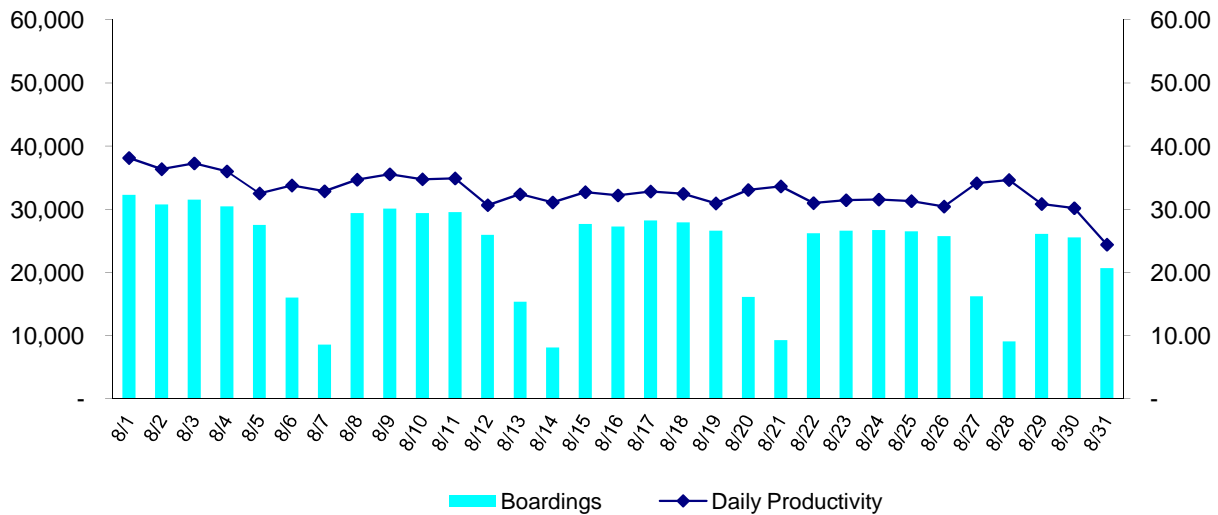


LANE TRANSIT DISTRICT
August 2011 Performance Report
13-October-2011

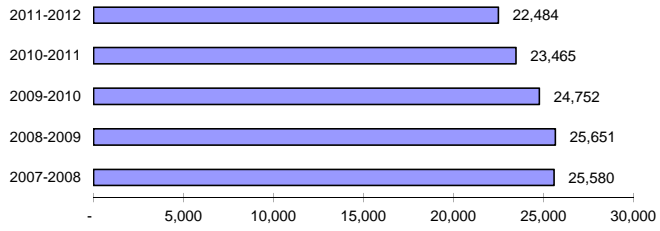
Performance Measure	Prior			Current			Previous		
	Current Month	Year's Month	% Change	Current Y-T-D	Previous Y-T-D	% Change	Current 12 Month	Prior 12 Month	% Change
Fixed Route Service									
Passenger Boardings	737,807	691,744	+ 6.7%	1,447,351	1,420,219	+ 1.9%	11,280,760	11,296,312	- 0.1%
Mobility Assisted Riders	11,169	11,039	+ 1.2%	20,830	22,421	- 7.1%	110,242	127,279	- 13.4%
<u>Average Passenger Boardings:</u>									
Weekday	27,778	26,591	+ 4.5%	28,527	27,565	+ 3.5%	38,421	38,459	- 0.1%
Saturday	15,953	15,429	+ 3.4%	16,073	15,488	+ 3.8%	18,320	18,193	+ 0.7%
Sunday	8,775	9,005	- 2.6%	8,695	8,989	- 3.3%	9,878	10,099	- 2.2%
Monthly Scheduled Hours	22,484	23,465	- 4.2%	43,111	46,663	- 7.6%	273,082	307,561	- 11.2%
Boardings Per Schedule Hour	32.8	29.5	+ 11.3%	33.57	30.44	+ 10.3%	41.31	36.73	+ 12.5%
Weekly Schedule Hours	4,985	5,336	- 6.6%	4,978	5,333	- 6.6%	5,325	6,017	- 11.5%
Weekdays	23	22		43	43		257	255	
Saturdays	4	4		9	10		50	53	
Sundays	4	5		9	9		52	55	
Passenger Revenues & Sales									
Total Passenger Revenues	\$515,860	\$531,922	- 3.0%	\$1,008,429	\$1,059,354	- 4.8%	\$7,342,054	\$7,237,344	+ 1.4%
Average Passenger Fare	\$0.699	\$0.769	- 9.1%	\$0.70	\$0.75	- 6.6%	\$0.65	\$0.64	+ 1.6%
Farebox Revenue									
Adult Pass	2,061	2,222	- 7.2%	3,998	4,409	- 9.3%	26,609	26,732	- 0.5%
Youth Pass	228	327	- 30.3%	454	632	- 28.2%	1,770	2,226	- 20.5%
Reduced Fare Pass	1,147	1,005	+ 14.1%	2,210	2,142	+ 3.2%	12,841	13,079	- 1.8%
Adult 3 Month Pass	50	45	+ 11.1%	106	114	- 7.0%	829	756	+ 9.7%
Youth 3 Month Pass	10	3	+ 233.3%	24	3	+ 700.0%	88	64	+ 37.5%
Reduced Fare 3 Month Pass	42	35	+ 20.0%	92	92	+ 0.0%	692	929	- 25.5%
Regular Tokens	497	715	- 30.5%	965	1,711	- 43.6%	5,947	17,556	- 66.1%
Reduced Fare Tokens	12	10	+ 20.0%	39	33	+ 18.2%	133	96	+ 38.5%
Fleet Services									
Fleet Miles	286,764	307,208	- 6.7%	562,593	607,576	- 7.4%	3,542,570	3,998,834	- 11.4%
Average Passenger Boardings/Mile	2.57	2.25	+ 14.3%	2.57	2.34	+ 10.1%	3.18	2.82	+ 12.7%
Fuel Cost	\$269,464	\$179,687	+ 50.0%	\$527,506	\$354,290	+ 48.9%	\$3,060,913	\$2,258,454	+ 35.5%
Fuel Cost Per Mile	\$0.940	\$0.585	+ 60.7%	\$0.938	\$0.583	+ 60.8%	\$0.864	\$0.565	+ 53.0%
Repair Costs	\$224,221	\$186,524	+ 20.2%	\$415,405	\$384,457	+ 8.0%	\$2,540,572	\$2,447,623	+ 3.8%
Total Repair Cost Per Mile	\$0.782	\$0.607	+ 28.8%	\$0.738	\$0.633	+ 16.7%	\$0.717	\$0.612	+ 17.2%
Preventive Maintenance Costs	\$25,741	\$30,139	- 14.6%	\$62,308	\$62,927	- 1.0%	\$369,664	\$398,210	- 7.2%
Total PM Cost Per Mile	\$0.090	\$0.098	- 8.5%	\$0.111	\$0.104	+ 6.9%	\$0.104	\$0.100	+ 4.8%
Mechanical Road Calls	73	102	- 28.4%	143	183	- 21.9%	970	1,129	- 14.1%
Miles/Mech. Road Call	3,928	3,012	+ 30.4%	3,934	3,320	+ 18.5%	3,652	3,542	+ 3.1%
Special Mobility Service									
Data unavailable at time of printing									
SMS Rides	16,444	15,014	+ 9.5%	31,099	30,471	+ 2.1%	181,986	174,238	+ 4.4%
SMS Ride Refusals	-	-	+ 0.0%	-	2	- 100.0%	2	3	- 33.3%
RideSource	8,154	6,965	+ 17.1%	15,318	13,682	+ 12.0%	86,547	85,499	+ 1.2%
RideSource Refusals	-	-	+ 0.0%	-	-	#DIV/0!	2	1	+ 100.0%

Daily Ridership Recap August 2011

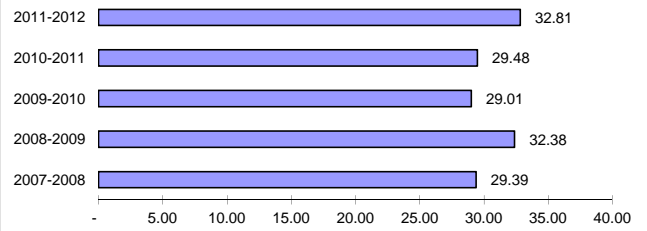
Date	Day	Service	Boardings	Mobility		Daily Productivity
				Assisted Boardings	Scheduled Hours	
8/1/2011	Monday	Weekday	32,278	449	846.40	38.14
8/2/2011	Tuesday	Weekday	30,786	368	846.40	36.37
8/3/2011	Wednesday	Weekday	31,542	448	846.40	37.27
8/4/2011	Thursday	Weekday	30,460	433	846.40	35.99
8/5/2011	Friday	Weekday	27,538	423	846.40	32.54
8/6/2011	Saturday	Saturday	16,042	316	475.10	33.77
8/7/2011	Sunday	Sunday	8,602	197	261.90	32.84
8/8/2011	Monday	Weekday	29,380	383	846.40	34.71
8/9/2011	Tuesday	Weekday	30,086	462	846.40	35.55
8/10/2011	Wednesday	Weekday	29,425	385	846.40	34.76
8/11/2011	Thursday	Weekday	29,552	380	846.40	34.91
8/12/2011	Friday	Weekday	25,955	437	846.40	30.67
8/13/2011	Saturday	Saturday	15,387	349	475.10	32.39
8/14/2011	Sunday	Sunday	8,139	170	261.90	31.08
8/15/2011	Monday	Weekday	27,698	442	846.40	32.72
8/16/2011	Tuesday	Weekday	27,266	380	846.40	32.21
8/17/2011	Wednesday	Weekday	28,246	417	860.10	32.84
8/18/2011	Thursday	Weekday	27,926	439	860.10	32.47
8/19/2011	Friday	Weekday	26,615	438	860.10	30.94
8/20/2011	Saturday	Saturday	16,158	272	488.70	33.06
8/21/2011	Sunday	Sunday	9,280	184	275.90	33.64
8/22/2011	Monday	Weekday	26,235	370	846.40	31.00
8/23/2011	Tuesday	Weekday	26,613	389	846.40	31.44
8/24/2011	Wednesday	Weekday	26,698	392	846.40	31.54
8/25/2011	Thursday	Weekday	26,509	386	846.40	31.32
8/26/2011	Friday	Weekday	25,750	485	846.40	30.42
8/27/2011	Saturday	Saturday	16,225	255	475.10	34.15
8/28/2011	Sunday	Sunday	9,078	124	261.90	34.66
8/29/2011	Monday	Weekday	26,125	370	846.40	30.87
8/30/2011	Tuesday	Weekday	25,531	342	846.40	30.16
8/31/2011	Wednesday	Weekday	20,682	284	846.40	24.44
Totals			737,807	11,169	22,484	32.81



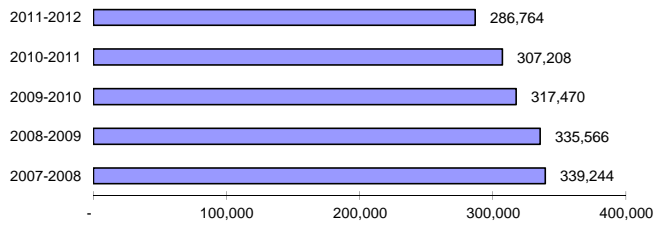
August Schedule Hours



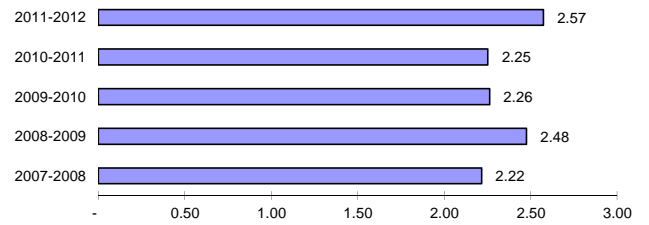
August Passenger Boardings per Schedule Hour



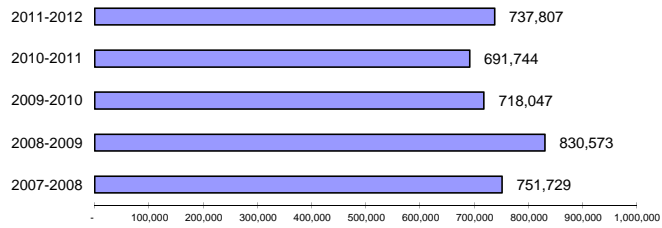
August Fleet Miles



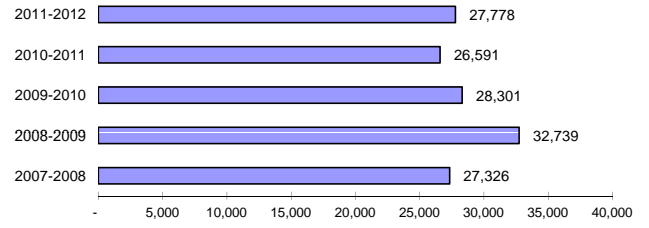
August Passenger Boardings per Mile



August Passenger Boardings



August Average Weekday Passenger Boardings



LANE TRANSIT DISTRICT

Five Year History of Passenger Boardings

