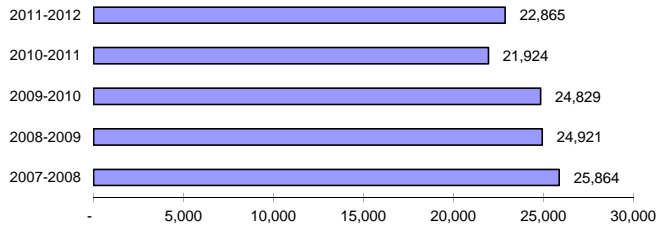


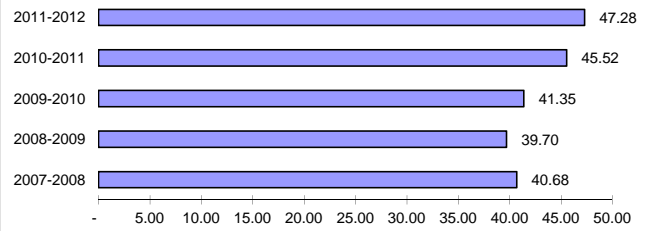
LANE TRANSIT DISTRICT
February 2012 Performance Report
19-March-2012

Performance Measure	Current Month	Prior Year's Month	% Change	Current Y-T-D	Previous Y-T-D	% Change	Current 12 Month	Prior 12 Month	% Change
Fixed Route Service									
Passenger Boardings	1,080,960	998,069	+ 8.3%	7,322,720	7,133,802	+ 2.6%	11,442,546	11,136,526	+ 2.7%
Mobility Assisted Riders	9,532	8,165	+ 16.7%	79,190	75,256	+ 5.2%	115,767	117,978	- 1.9%
<u>Average Passenger Boardings:</u>									
Weekday	45,356	43,724	+ 3.7%	37,490	36,591	+ 2.5%	38,860	37,804	+ 2.8%
Saturday	21,060	20,356	+ 3.5%	18,074	17,448	+ 3.6%	18,640	18,016	+ 3.5%
Sunday	11,060	10,543	+ 4.9%	9,761	9,872	- 1.1%	9,853	9,961	- 1.1%
Monthly Scheduled Hours	22,865	21,924	+ 4.3%	180,655	183,100	- 1.3%	274,189	288,633	- 5.0%
Boardings Per Schedule Hour	47.3	45.5	+ 3.8%	40.53	38.96	+ 4.0%	41.73	38.58	+ 8.2%
Weekly Schedule Hours	5,480	5,481	- 0.0%	5,294	5,379	- 1.6%	5,327	5,609	- 5.0%
Weekdays	21	20		170	170		257	257	
Saturdays	4	4		36	34		53	51	
Sundays	4	4		33	35		50	53	
Passenger Revenues & Sales									
Total Passenger Revenues	\$625,168	\$666,649	- 6.2%	\$4,432,280	\$4,873,009	- 9.0%	\$6,952,250	7,305,487	- 4.8%
Average Passenger Fare	\$0.578	\$0.668	- 13.4%	\$0.61	\$0.68	- 11.4%	\$0.61	\$0.66	- 7.4%
Farebox Revenue									
Adult Pass	2,079	2,239	- 7.1%	15,770	17,642	- 10.6%	25,148	27,207	- 7.6%
Youth Pass	1,084	121	+ 795.9%	6,000	1,433	+ 318.7%	6,515	2,093	+ 211.3%
Reduced Fare Pass	1,095	1,022	+ 7.1%	8,719	8,513	+ 2.4%	12,979	13,001	- 0.2%
Adult 3 Month Pass	79	47	+ 68.1%	741	522	+ 42.0%	1,056	807	+ 30.9%
Youth 3 Month Pass	65	3	+ 2066.7%	605	49	+ 1134.7%	623	59	+ 955.9%
Reduced Fare 3 Month Pass	62	46	+ 34.8%	453	449	+ 0.9%	696	741	- 6.1%
Regular Tokens	249	422	- 41.0%	2,901	5,061	- 42.7%	4,533	8,647	- 47.6%
Reduced Fare Tokens	15	9	+ 66.7%	96	99	- 3.0%	124	118	+ 5.1%
Fleet Services									
Fleet Miles	292,368	280,677	+ 4.2%	2,351,084	2,377,933	- 1.1%	3,560,704	3,725,007	- 4.4%
Average Passenger Boardings/Mile	3.70	3.56	+ 4.0%	3.11	3.00	+ 3.8%	3.21	2.99	+ 7.5%
Fuel Cost	\$266,056	\$235,803	+ 12.8%	\$2,185,694	\$1,696,087	+ 28.9%	\$3,377,304	\$2,413,902	+ 39.9%
Fuel Cost Per Mile	\$0.910	\$0.840	+ 8.3%	\$0.930	\$0.713	+ 30.3%	\$0.948	\$0.648	+ 46.4%
Repair Costs	\$214,287	\$196,199	+ 9.2%	\$1,688,703	\$1,639,418	+ 3.0%	\$2,560,213	\$2,529,374	+ 1.2%
Total Repair Cost Per Mile	\$0.733	\$0.699	+ 4.9%	\$0.718	\$0.689	+ 4.2%	\$0.719	\$0.679	+ 5.9%
Preventive Maintenance Costs	\$29,851	\$29,227	+ 2.1%	\$253,958	\$234,293	+ 8.4%	\$389,948	\$379,924	+ 2.6%
Total PM Cost Per Mile	\$0.102	\$0.104	- 1.9%	\$0.108	\$0.099	+ 9.6%	\$0.110	\$0.102	+ 7.4%
Mechanical Road Calls	57	90	- 36.7%	578	649	- 10.9%	939	995	- 5.6%
Miles/Mech. Road Call	5,129	3,119	+ 64.5%	4,068	3,664	+ 11.0%	3,792	3,744	+ 1.3%
Special Mobility Service									
SMS Rides	17,226	15,644	+ 10.1%	128,400	119,471	+ 7.5%	190,287	181,118	+ 5.1%
SMS Ride Refusals	-	-	+ 0.0%	-	4	- 100.0%	-	5	- 100.0%
RideSource	8,448	6,373	+ 32.6%	61,632	54,592	+ 12.9%	91,951	83,448	+ 10.2%
RideSource Refusals	-	-	+ 0.0%	-	2	- 100.0%	-	3	- 100.0%

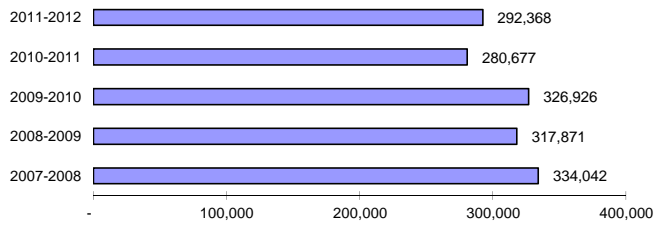
February Schedule Hours



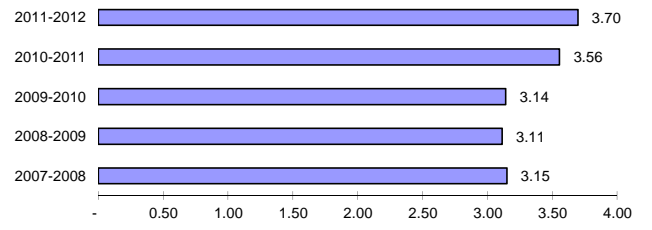
February Passenger Boardings per Schedule Hour



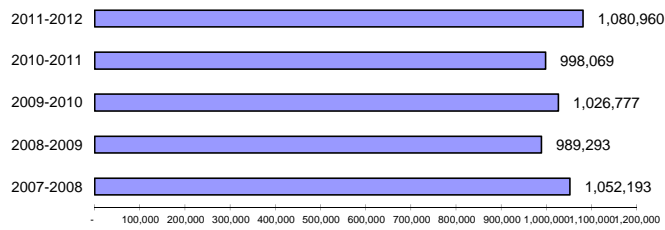
February Fleet Miles



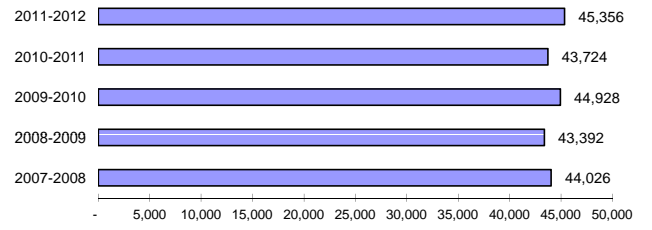
February Passenger Boardings per Mile



February Passenger Boardings

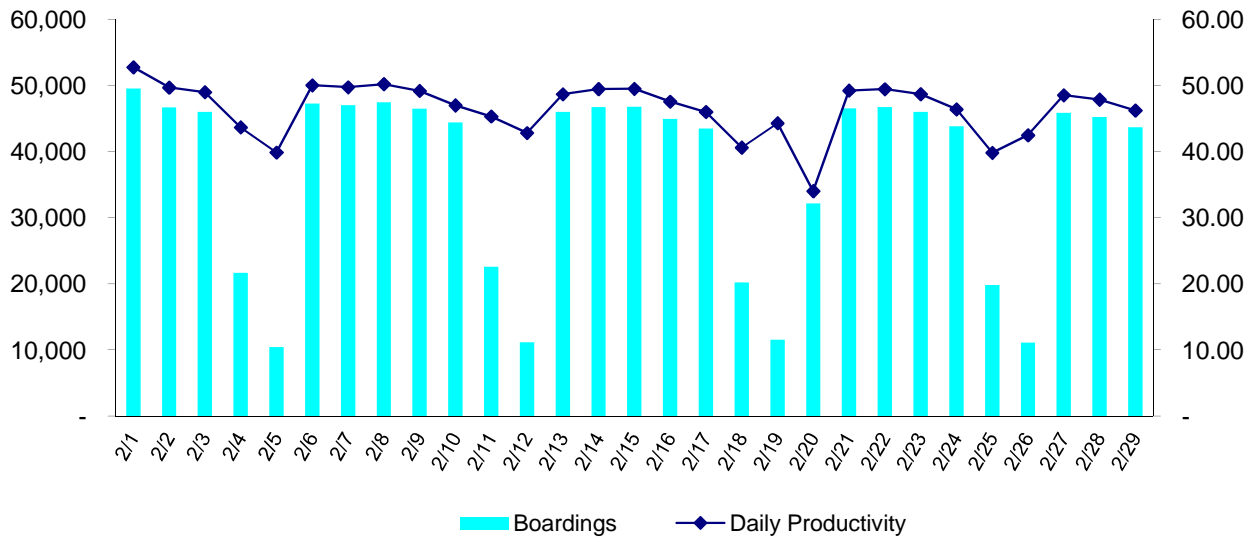


February Average Weekday Passenger Boardings



Daily Ridership Recap February 2012

Date	Day	Service	Boardings	Mobility	Scheduled Hours	Daily Productivity
				Assisted Boardings		
2/1/2012	Wednesday	Weekday	49,530	477	939.40	52.73
2/2/2012	Thursday	Weekday	46,652	382	939.40	49.66
2/3/2012	Friday	Weekday	45,998	502	939.40	48.97
2/4/2012	Saturday	Saturday	21,668	345	496.40	43.65
2/5/2012	Sunday	Sunday	10,408	155	261.20	39.85
2/6/2012	Monday	Weekday	47,262	368	945.10	50.01
2/7/2012	Tuesday	Weekday	46,985	346	945.10	49.71
2/8/2012	Wednesday	Weekday	47,433	336	945.10	50.19
2/9/2012	Thursday	Weekday	46,466	396	945.10	49.17
2/10/2012	Friday	Weekday	44,393	430	945.10	46.97
2/11/2012	Saturday	Saturday	22,550	293	497.80	45.30
2/12/2012	Sunday	Sunday	11,178	148	261.20	42.79
2/13/2012	Monday	Weekday	45,976	361	945.10	48.65
2/14/2012	Tuesday	Weekday	46,732	397	945.10	49.45
2/15/2012	Wednesday	Weekday	46,761	376	945.10	49.48
2/16/2012	Thursday	Weekday	44,925	364	945.10	47.53
2/17/2012	Friday	Weekday	43,456	406	945.10	45.98
2/18/2012	Saturday	Saturday	20,207	200	497.80	40.59
2/19/2012	Sunday	Sunday	11,565	134	261.20	44.28
2/20/2012	Monday	Weekday	32,147	244	945.10	34.01
2/21/2012	Tuesday	Weekday	46,507	384	945.10	49.21
2/22/2012	Wednesday	Weekday	46,712	349	945.10	49.43
2/23/2012	Thursday	Weekday	45,999	471	945.10	48.67
2/24/2012	Friday	Weekday	43,824	429	945.10	46.37
2/25/2012	Saturday	Saturday	19,814	203	497.80	39.80
2/26/2012	Sunday	Sunday	11,089	136	261.20	42.45
2/27/2012	Monday	Weekday	45,847	328	945.10	48.51
2/28/2012	Tuesday	Weekday	45,218	323	945.10	47.84
2/29/2012	Wednesday	Weekday	43,658	249	945.10	46.19
Totals			1,080,960	9,532	22,865	47.28



LANE TRANSIT DISTRICT

Five Year History of Passenger Boardings

