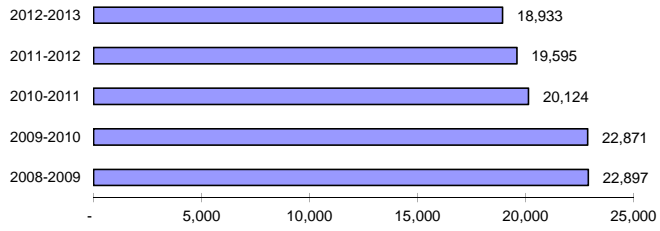


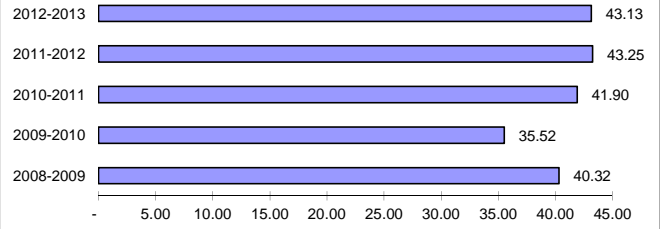
LANE TRANSIT DISTRICT
September 2012 Performance Report
16-October-2012

Performance Measure	Current Month	Prior Year's Month	% Change	Current Y-T-D	Previous Y-T-D	% Change	Current 12 Month	Prior 12 Month	% Change
Fixed Route Service									
Passenger Boardings	816,497	847,407	- 3.6%	2,345,261	2,294,758	+ 2.2%	11,513,627	11,284,992	+ 2.0%
Mobility Assisted Riders	11,644	10,575	+ 10.1%	36,211	31,405	+ 15.3%	126,980	110,173	+ 15.3%
<u>Average Passenger Boardings:</u>									
Weekday	35,594	35,198	+ 1.1%	31,735	30,750	+ 3.2%	39,124	38,443	+ 1.8%
Saturday	18,161	17,481	+ 3.9%	17,233	16,542	+ 4.2%	19,263	18,375	+ 4.8%
Sunday	9,881	9,580	+ 3.1%	9,549	8,990	+ 6.2%	10,172	9,793	+ 3.9%
Monthly Revenue Hours	18,933	19,595	- 3.4%	58,387	58,562	- 0.3%	247,305	242,889	+ 1.8%
Boardings Per Revenue Hour	43.1	43.2	- 0.3%	40.17	39.19	+ 2.5%	46.56	46.46	+ 0.2%
Weekly Revenue Hours	4,757	4,698	+ 1.3%	4,596	4,564	+ 0.7%	4,820	4,741	+ 1.7%
Weekdays	19	21		63	64		255	257	
Saturdays	5	4		13	13		54	50	
Sundays	5	4		14	13		51	52	
Passenger Revenues & Sales									
Total Passenger Revenues	\$355,151	\$416,944	- 14.8%	\$1,414,721	\$1,425,373	- 0.7%	6,744,364	7,212,268	- 6.5%
Average Passenger Fare	\$0.435	\$0.492	- 11.6%	\$0.60	\$0.62	- 2.9%	\$0.59	\$0.64	- 8.3%
Farebox Revenue	\$164,661	\$166,236	- 0.9%	\$551,773	\$518,971	+ 6.3%	\$2,105,253	\$1,876,803	+ 12.2%
Adult Pass	1,908	2,063	- 7.5%	6,116	6,061	+ 0.9%	24,035	26,534	- 9.4%
Youth Pass	1,110	261	+ 325.3%	1,576	715	+ 120.4%	10,824	1,881	+ 475.4%
Reduced Fare Pass	1,029	1,186	- 13.2%	3,667	3,396	+ 8.0%	13,590	12,931	+ 5.1%
Adult 3 Month Pass	78	80	- 2.5%	216	186	+ 16.1%	1,078	830	+ 29.9%
Youth 3 Month Pass	139	112	+ 24.1%	200	136	+ 47.1%	890	188	+ 373.4%
Reduced Fare 3 Month Pass	64	79	- 19.0%	176	171	+ 2.9%	722	692	+ 4.3%
Regular Tokens	307	420	- 26.9%	913	1,385	- 34.1%	3,389	5,552	- 39.0%
Reduced Fare Tokens	3	7	- 57.1%	13	46	- 71.7%	105	134	- 21.6%
Fleet Services									
Fleet Miles	275,971	290,062	- 4.9%	838,541	852,655	- 1.7%	3,535,688	3,536,625	- 0.0%
Average Passenger Boardings/Mile	2.96	2.92	+ 1.3%	2.80	2.69	+ 3.9%	3.26	3.19	+ 2.1%
Fuel Cost	\$270,573	\$284,866	- 5.0%	\$761,318	\$812,372	- 6.3%	\$3,314,270	\$3,141,098	+ 5.5%
Fuel Cost Per Mile	\$0.980	\$0.982	- 0.2%	\$0.908	\$0.953	- 4.7%	\$0.937	\$0.888	+ 5.5%
Repair Costs	\$166,404	\$201,716	- 17.5%	\$479,744	\$613,971	- 21.9%	\$2,389,816	\$2,539,524	- 5.9%
Total Repair Cost Per Mile	\$0.603	\$0.695	- 13.3%	\$0.572	\$0.720	- 20.5%	\$0.676	\$0.718	- 5.9%
Preventive Maintenance Costs	\$29,930	\$26,432	+ 13.2%	\$88,895	\$88,740	+ 0.2%	\$388,680	\$371,430	+ 4.6%
Total PM Cost Per Mile	\$0.108	\$0.091	+ 19.0%	\$0.106	\$0.104	+ 1.9%	\$0.110	\$0.105	+ 4.7%
Mechanical Road Calls	78	73	+ 6.8%	162	216	- 25.0%	809	980	- 17.4%
Miles/Mech. Road Call	3,538	3,973	- 11.0%	5,176	3,947	+ 31.1%	4,370	3,609	+ 21.1%
Special Mobility Service									
SMS Rides	14,917	16,827	- 11.4%	45,067	47,926	- 6.0%	190,092	185,994	+ 2.2%
SMS Ride Refusals	-	-	+ 0.0%	-	-	+ 0.0%	5	2	+ 150.0%
RideSource	6,528	7,416	- 12.0%	21,013	22,734	- 7.6%	91,034	87,389	+ 4.2%
RideSource Refusals	-	-	+ 0.0%	-	-	+ 0.0%	5	2	+ 150.0%

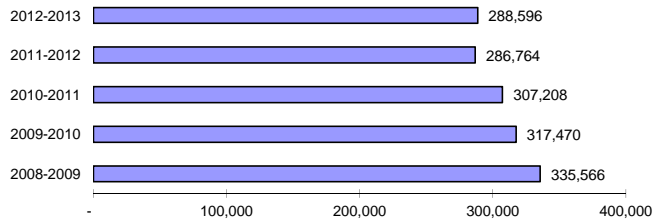
September Revenue Hours



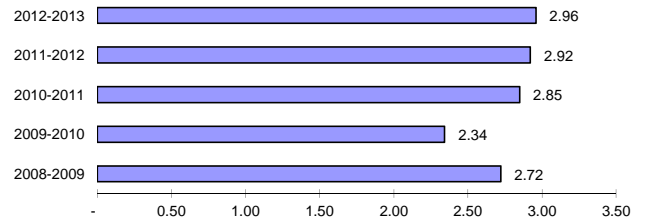
September Passenger Boardings per Revenue Hour



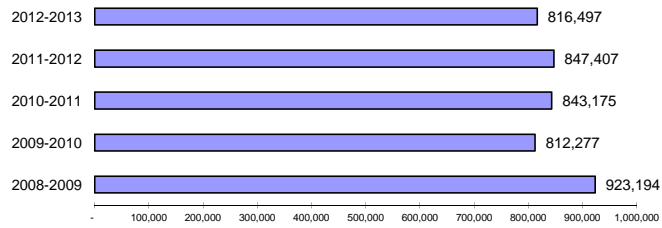
September Fleet Miles



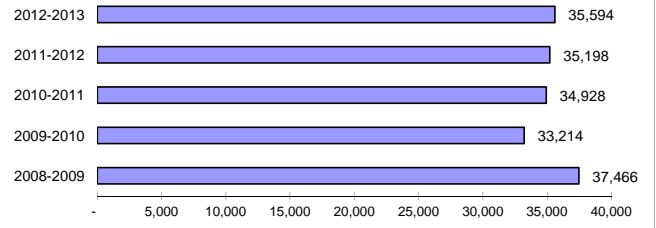
September Passenger Boardings per Mile



September Passenger Boardings

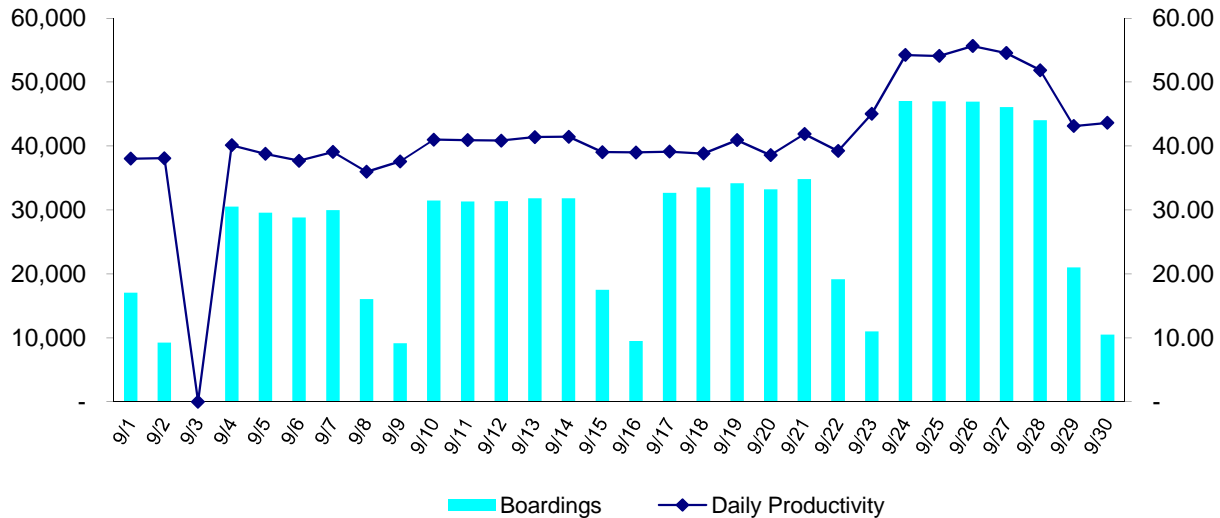


September Average Weekday Passenger Boardings



Daily Ridership Recap September 2012

Date	Day	Service	Boardings	Mobility	Revenue	Daily
				Assisted Boardings	Hours	Productivity
9/1/2012	Saturday	Saturday	17,069	447	449.00	38.02
9/2/2012	Sunday	Sunday	9,256	276	243.00	38.09
9/3/2012	Monday	Closed	-	-	-	-
9/4/2012	Tuesday	Weekday	30,519	610	761.00	40.10
9/5/2012	Wednesday	Weekday	29,568	537	763.00	38.75
9/6/2012	Thursday	Weekday	28,832	444	765.00	37.69
9/7/2012	Friday	Weekday	29,968	477	767.00	39.07
9/8/2012	Saturday	Saturday	16,080	356	447.00	35.97
9/9/2012	Sunday	Sunday	9,136	222	243.00	37.60
9/10/2012	Monday	Weekday	31,479	428	768.00	40.99
9/11/2012	Tuesday	Weekday	31,335	454	766.00	40.91
9/12/2012	Wednesday	Weekday	31,364	501	768.00	40.84
9/13/2012	Thursday	Weekday	31,836	471	769.00	41.40
9/14/2012	Friday	Weekday	31,834	445	768.00	41.45
9/15/2012	Saturday	Saturday	17,493	273	448.00	39.05
9/16/2012	Sunday	Sunday	9,513	168	244.00	38.99
9/17/2012	Monday	Weekday	32,695	403	836.00	39.11
9/18/2012	Tuesday	Weekday	33,527	509	864.00	38.80
9/19/2012	Wednesday	Weekday	34,177	458	835.00	40.93
9/20/2012	Thursday	Weekday	33,203	411	861.00	38.56
9/21/2012	Friday	Weekday	34,837	504	832.00	41.87
9/22/2012	Saturday	Saturday	19,170	321	489.00	39.20
9/23/2012	Sunday	Sunday	10,988	159	244.00	45.03
9/24/2012	Monday	Weekday	47,058	445	868.00	54.21
9/25/2012	Tuesday	Weekday	46,996	470	869.00	54.08
9/26/2012	Wednesday	Weekday	46,947	485	844.00	55.62
9/27/2012	Thursday	Weekday	46,089	402	845.00	54.54
9/28/2012	Friday	Weekday	44,024	520	849.00	51.85
9/29/2012	Saturday	Saturday	20,992	296	487.00	43.10
9/30/2012	Sunday	Sunday	10,512	152	241.00	43.62
Totals			816,497	11,644	18,933	43.13



LANE TRANSIT DISTRICT

Five Year History of Passenger Boardings

